

Certificate of Analysis

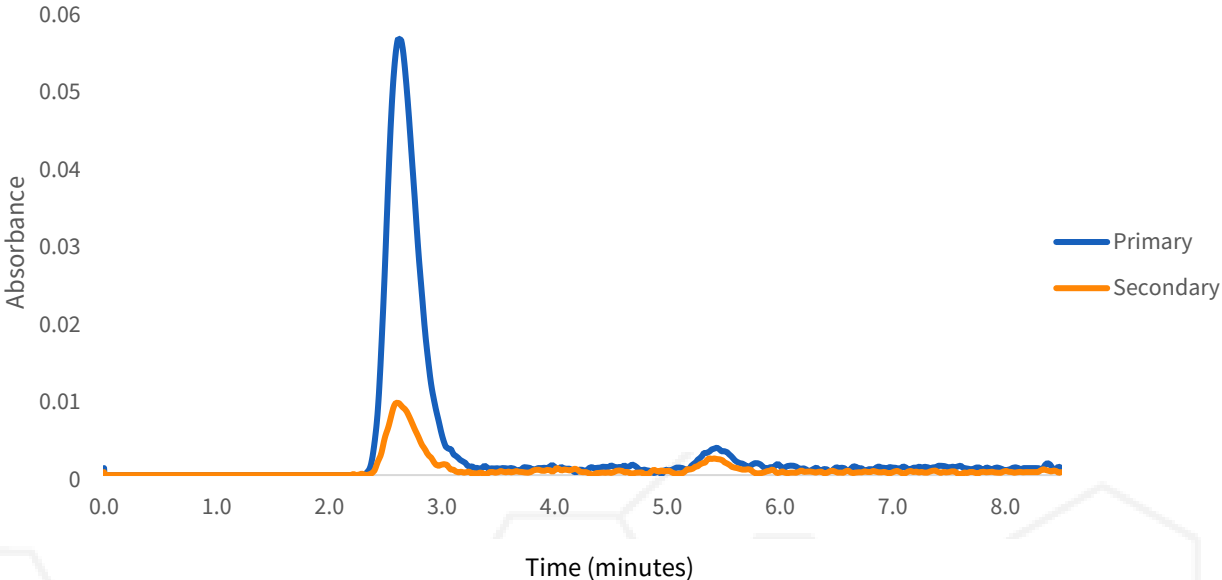
Date:	2024-07-05 13:12:10 -05:00	Cultivar:	Lemon G + mountain mango
Serial:	LL030490	Moisture:	0.0%
LightLab	Devils Lettuce Test Lab	Col Tests Remaining:	21
Operator:	Adriel	CoA Revision:	1
Sample ID:	Zach's Family Farm	Calibration Exp:	2025-03-14
Method:	LightLab HPLC	Product:	Pet Tincture
Test Type:	Tincture mg/ml	SKU:	
Weight / Volume:	0.5 g	Batch:	
Solvent:	20 ml		
Temperature:	25.5 °C		
Notes:			

Cannabinoid Profile

Analyte	mg/ml	LOQ
THC-A	ND	2.1
Δ9-THC	ND	2.1
CBD-A	ND	2.1
CBG-A	ND	2.1
CBD/CBG	7.7	2.1
CBN-A	ND	2.1
CBN	ND	2.1
CBC-A	ND	2.1
CBC	ND	2.1
Δ8-THC*	ND	16.4
Δ10-THC	ND	2.1
THCV-A	ND	2.1
THCV	ND	2.1
Terpenes	Low	
Total THC	ND	
Total Cannabinoids	7.7	

ND = Not Detected; n/a = Not Analyzed; LOQ = Limit of Quantification; Total THC = (0.877 x THC-A) + Δ9-THC; Total CBD = (0.877 x CBD-A) + CBD. * Δ8THC has lower precision and higher detection limit than other cannabinoids.

Chromatogram



Sample Images



Change History

Date	User	Action
2024-07-05 13:12:10 -05:00		Test Recorded
2024-07-05 17:05:55 -05:00	AS	Changed Cultivar from "Tincture" to "N/A". Changed EdblProduct from "" to "Pet Tincture".
2024-07-05 17:06:16 -05:00	AS	Added an image
2024-07-05 17:07:40 -05:00	AS	Added an image
2024-07-05 17:08:00 -05:00		Generated a CoA (revision 0)

Date	User	Action
2024-07-05 17:31:23 -05:00	AS	Changed Cultivar from "N/A" to "Lemon G + mountain mango"
2024-07-05 17:31:26 -05:00		Generated a CoA (revision 1)



Scan for Authenticity

Approved

Date

The signatory confirms that the Operator has performed the sample preparation according to the LightLab User's Guide. This report is for quality assurance purposes only. These results relate only to the sample included on this report. Orange Photonics makes no claims as to the efficacy, safety, or risks associated with any detected or non-detected level of any compounds reported herein. Orange Photonics makes no claims regarding the adherence to sample preparation guidelines, by the operator, as outlined in the LightLab User's Guide.

