

Certificate of Analysis

Date: 2024-07-05 13:37:03 -05:00
 Serial: LL030490
 LightLab: Devils Lettuce Test Lab
 Operator: Adriel
 Sample ID: Zach's Family Farm
 Method: LightLab HPLC
 Test Type: Tincture mg/ml
 Weight / Volume: 0.5 g
 Solvent: 20 ml
 Temperature: 26.9 °C
 Notes:

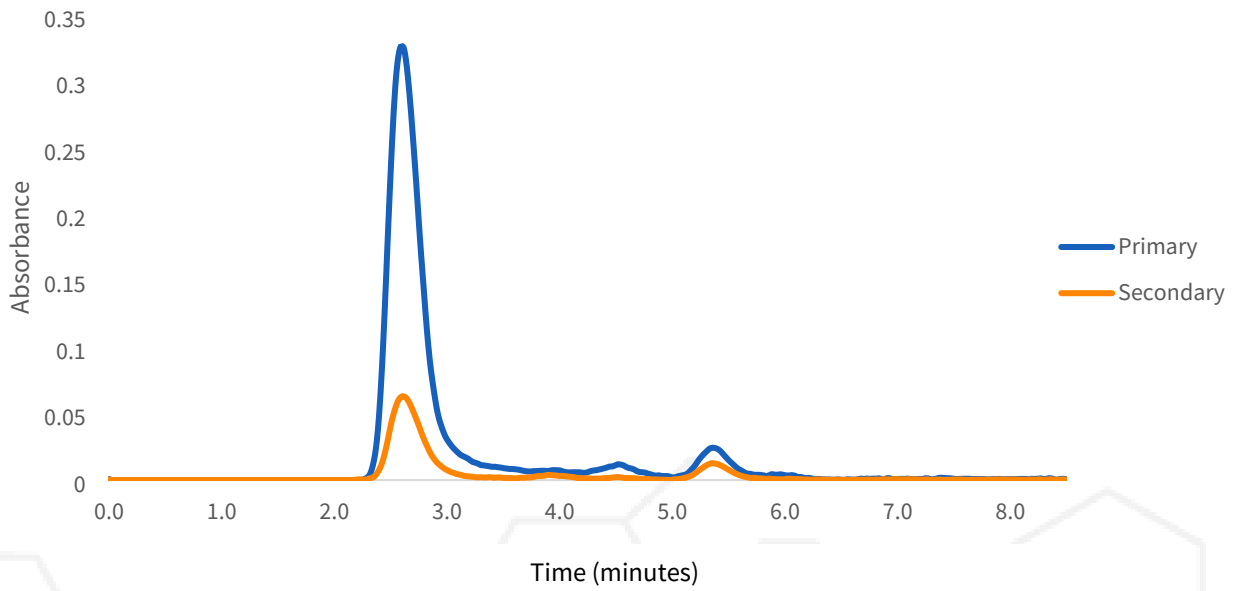
Cultivar: Lemon G + mountain mango
 Moisture: 0.0%
 Col Tests Remaining: 20
 CoA Revision: 1
 Calibration Exp: 2025-03-14
 Product: CBD/CBG Tincture
 SKU:
 Batch:

Cannabinoid Profile

Analyte	mg/ml	LOQ
THC-A	ND	2.1
Δ9-THC	2.8	2.1
CBD-A	ND	2.1
CBG-A	ND	2.1
CBD/CBG	49.4	2.1
CBN-A	ND	2.1
CBN	ND	2.1
CBC-A	ND	2.1
CBC	2.2	2.1
Δ8-THC*	ND	16.4
Δ10-THC	ND	2.1
THCV-A	ND	2.1
THCV	ND	2.1
Terpenes	Low	
Total THC	2.8	
Total Cannabinoids	54.4	

ND = Not Detected; n/a = Not Analyzed; LOQ = Limit of Quantification; Total THC = (0.877 x THC-A) + Δ9-THC; Total CBD = (0.877 x CBD-A) + CBD. * Δ8THC has lower precision and higher detection limit than other cannabinoids.

Chromatogram



Sample Images



Change History

Date	User	Action
2024-07-05 13:37:03 -05:00		Test Recorded
2024-07-05 17:10:14 -05:00	AS	Changed Cultivar from "CBD/CBG Tincture" to "N/A". Changed EdblProduct from "" to "CBD/CBG Tincture".
2024-07-05 17:10:23 -05:00	AS	Added an image
2024-07-05 17:11:02 -05:00	AS	Added an image
2024-07-05 17:13:35 -05:00		Generated a CoA (revision 0)

Date	User	Action
2024-07-05 17:30:41 -05:00	AS	Changed Cultivar from "N/A" to "Lemon G + mountain mango"
2024-07-05 17:30:46 -05:00		Generated a CoA (revision 1)



Approved _____ Date _____ Scan for Authenticity

The signatory confirms that the Operator has performed the sample preparation according to the LightLab User's Guide. This report is for quality assurance purposes only. These results relate only to the sample included on this report. Orange Photonics makes no claims as to the efficacy, safety, or risks associated with any detected or non-detected level of any compounds reported herein. Orange Photonics makes no claims regarding the adherence to sample preparation guidelines, by the operator, as outlined in the LightLab User's Guide.

